

Normal Performance Carpet Tile

(Non flamme retardant / Non Anti -static)

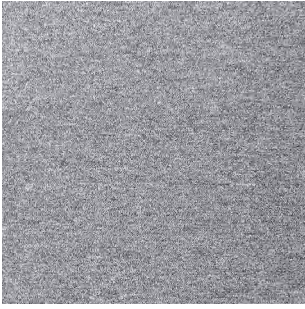


Relle

www.relleflooring.com

**One stop
Solution professor**

RE-HL10 Series



RE-HL1001



RE-HL1002



RE-HL1003



RE-HL1004

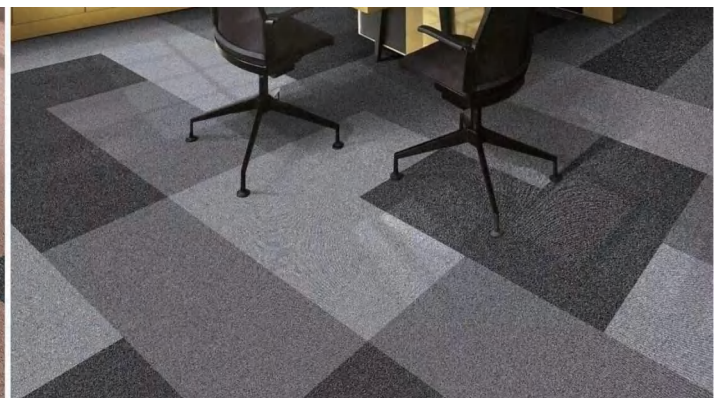
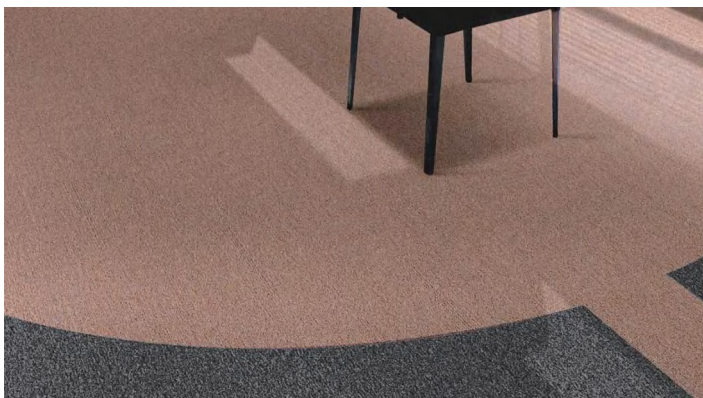


RE-HL1005



RE-HL1006

PRODUCT DESCRIPTION		
Tufted Construction: Level Loop Pile	Backing: EP Soft Cushion	Smoke Density: ASTM E 662-06 [Pass < 450]
Fiber: 100%PP	Total thickness: 10/7mm ± 0.5mm	Reaction to Fire: EN ISO 9239-1:2002 [Cf1-s1]
Dyemethod: Solution Dyed	Primary Backing: Synthetic	Color Fastness: AATCC / 16 [5/5 on Beige Scale]
Gauge: 1/10"	Secondary Backing: PVC reinforced by Glass Fiber	Thermal Resistance: ISO 8302 [0.4m2 .K/W]
Pile Weight(g/ m²): 450g+5%	Installation Method: Monolithic or Quarter Turn	Impact Sound reduction: ISO 140-8 [23dB]
Pile Thickness: 3.5mm+0.5mm	Traffic Classification: Commercial	Sound Absorption: EN ISO 11654 [aw:0.15(H)]
Tile Size: 500x500mm	Anti-microbial: Ultra Fresh (Optional)	Castor Chair Test: DIN 54324 [R ≥2.4]



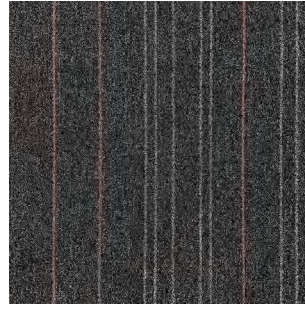
RE-HL20 Series



RE-HL2001



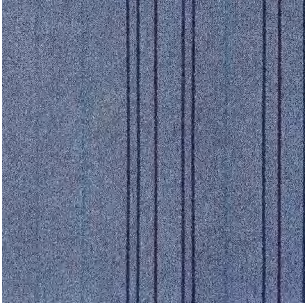
RE-HL2002



RE-HL2003



RE-HL2004



RE-HL2005



RE-HL2006

PRODUCT DESCRIPTION

Tufted Construction: Level Loop Pile	Backing: EP Soft Cushion	Smoke Density: ASTM E 662-06 [Pass < 450]
Fiber: 100%PP	Total thickness: 10/7mm ± 0.5mm	Reaction to Fire: EN ISO 9239-1:2002 [Cf1-s1]
Dyemethod: Solution Dyed	Primary Backing: Synthetic	Color Fastness: AATCC / 16 [5/5 on Beige Scale]
Gauge: 1/10"	Secondary Backing: PVC reinforced by Glass Fiber	Thermal Resistance: ISO 8302 [0.4m2 .K/W]
Pile Weight(g/ m²): 450g+5%	Installation Method: Monolithic or Quarter Turn	Impact Sound reduction: ISO 140-8 [23dB]
Pile Thickness: 3.5mm+0.5mm	Traffic Classification: Commercial	Sound Absorption: EN ISO 11654 [aw:0.15(H)]
Tile Size: 500x500mm	Anti-microbial: Ultra Fresh (Optional)	Castor Chair Test: DIN 54324 [R ≥2.4]



RE-HL30 Series



RE-HL3001

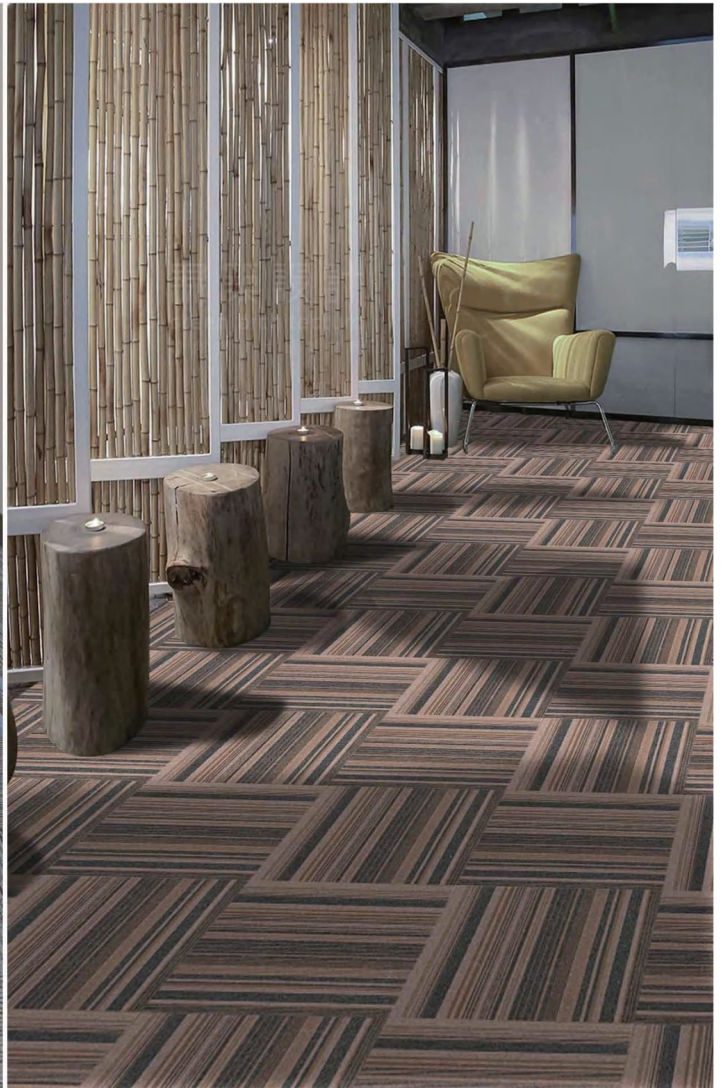


RE-HL3002



RE-HL3003

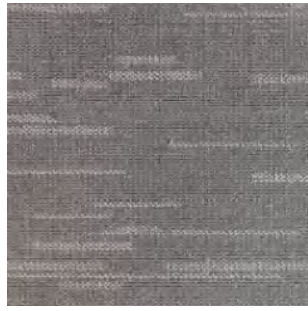
PRODUCT DESCRIPTION		
Tufted Construction: Level Loop Pile	Backing: EP Soft Cushion	Smoke Density: ASTM E 662-06 [Pass < 450]
Fiber: 100%PP	Total thickness: 10/7mm ± 0.5mm	Reaction to Fire: EN ISO 9239-1:2002 [Cf1-s1]
Dyemethod: Solution Dyed	Primary Backing: Synthetic	Color Fastness: AATCC / 16 [5/5 on Beige Scale]
Gauge: 1/10"	Secondary Backing: PVC reinforced by Glass Fiber	Thermal Resistance: ISO 8302 [0.4m2 .K/W]
Pile Weight(g/ m²): 450g+5%	Installation Method: Monolithic or Quarter Turn	Impact Sound reduction: ISO 140-8 [23dB]
Pile Thickness: 3.5mm+0.5mm	Traffic Classification: Commercial	Sound Absorption: EN ISO 11654 [aw:0.15(H)]
Tile Size: 500x500mm	Anti-microbial: Ultra Fresh (Optional)	Castor Chair Test: DIN 54324 [R ≥2.4]



RE-HL40 Series



RE-HL4001



RE-HL4002



RE-HL4003



RE-HL4004



RE-HL4005



RE-HL4006



RE-HL4003



RE-HL4004

PRODUCT DESCRIPTION		
Tufted Construction: Multi-Level Loop	Backing: EP Soft Cushion	Smoke Density: ASTM E 662-06 [Pass < 450]
PileFiber: 100%PP	Total thickness: 10/7mm ± 0.5mm	Reaction to Fire: EN ISO 9239-1:2002 [Cf1-s1]
Dyemethod: Solution Dyed	Primary Backing: Synthetic	Color Fastness: AATCC / 16 [5/5 on Beige Scale]
Gauge: 1/10"	Secondary Backing: PVC reinforced by Glass Fiber	Thermal Resistance: ISO 8302 [0.4m2 .K/W]
Pile Weight(g/ m²): 550g+5%	Installation Method: Monolithic or Quarter Turn	Impact Sound reduction: ISO 140-8 [23dB]
Pile Thickness: 4mm+0.5mm	Traffic Classification: Commercial	Sound Absorption: EN ISO 11654 [aw:0.15(H)]
Tile Size: 500x500mm	Anti-microbial: Ultra Fresh (Optional)	Castor Chair Test: DIN 54324 [R ≥2.4]



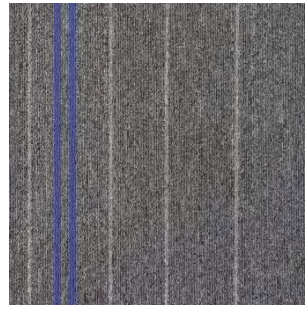
RE-ZL Series



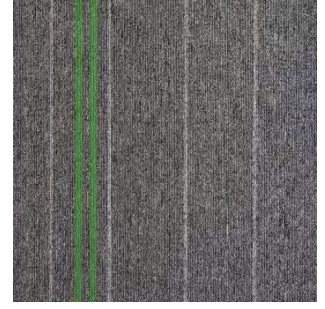
RE-ZL2001



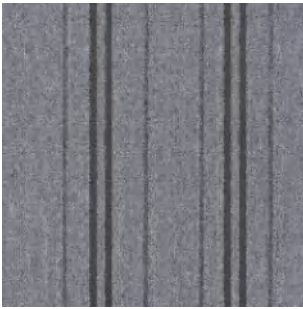
RE-ZL2002



RE-ZL2003



RE-ZL2004



RE-ZL3005



RE-ZL3006



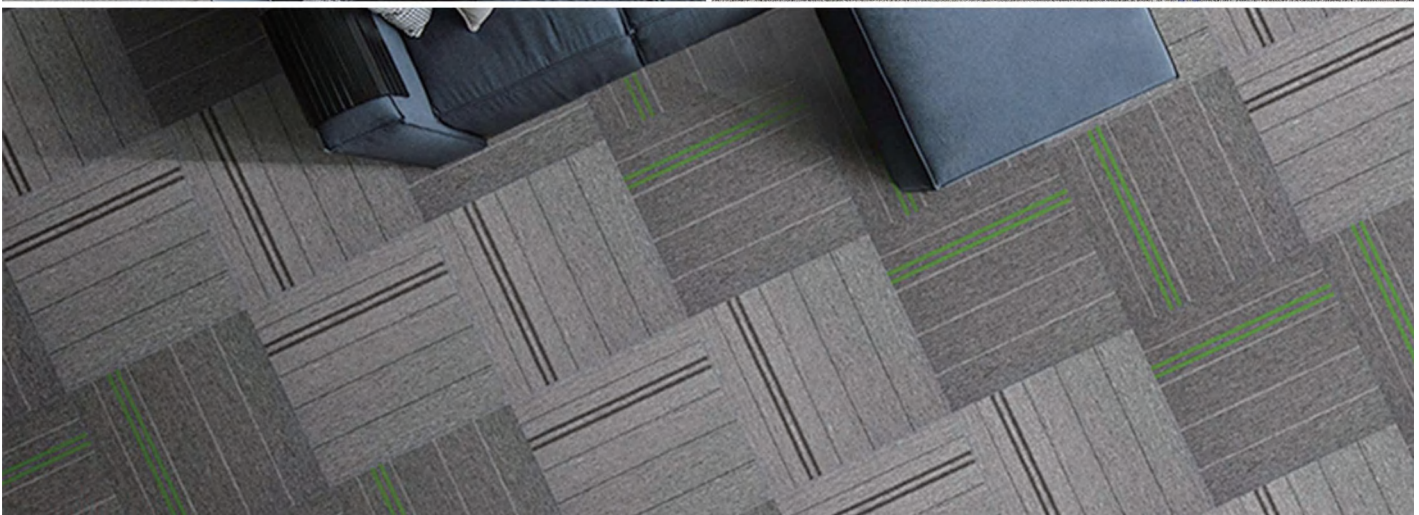
RE-ZL3003



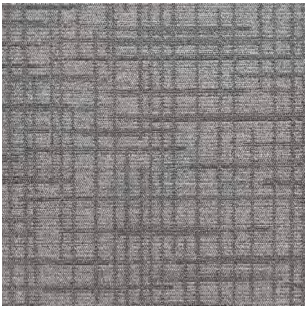
RE-ZL3004

PRODUCT DESCRIPTION

Tufted Construction: Level Level Loop	Backing: EP Soft Cushion	Smoke Density: ASTM E 662-06 [Pass < 450]
PileFiber: 100%PP	Total thickness: 10/7mm ± 0.5mm	Reaction to Fire: EN ISO 9239-1:2002 [Cf1-s1]
Dyemethod: Solution Dyed	Primary Backing: Synthetic	Color Fastness: AATCC / 16 [5/5 on Beige Scale
Gauge: 1/10"	Secondary Backing: PVC reinforced by Glass Fiber	Thermal Resistance: ISO 8302 [0.4m2 .K/W]
Pile Weight(g/ m²): 450g+5%	Installation Method: Monolithic or Quarter Turn	Impact Sound reduction: ISO 140-8 [23dB]
Pile Thickness: 3.5mm+0.5mm	Traffic Classification: Commercial	Sound Absorption: EN ISO 11654 [aw:0.15(H)]
Tile Size: 500x500mm	Anti-microbial: Ultra Fresh (Optional)	Castor Chair Test: DIN 54324 [R ≥2.4]



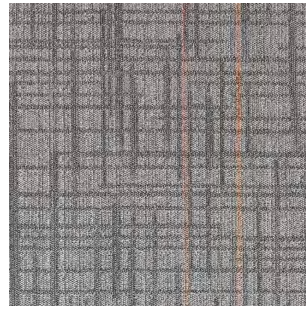
RE-TY Series



RE-TY10



RE-TY11



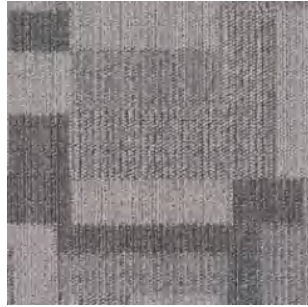
RE-TY12



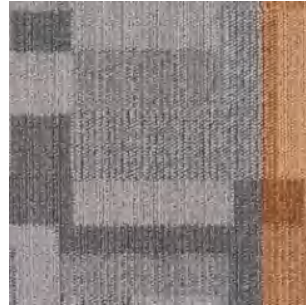
RE-TY13



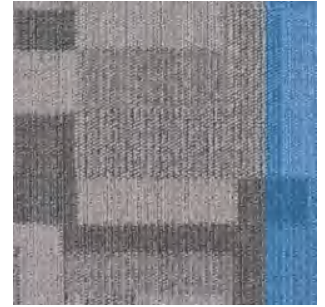
RE-TY20



RE-TY21



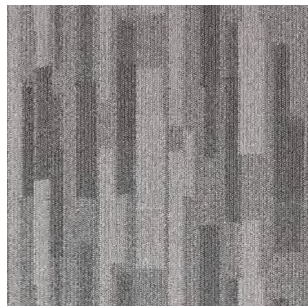
RE-TY22



RE-TY23



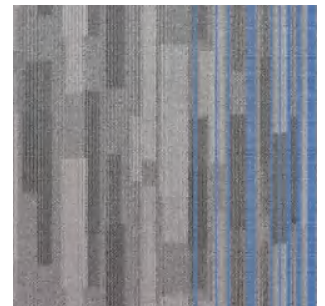
RE-TY30



RE-TY31



RE-TY32



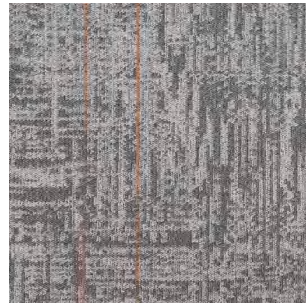
RE-TY33



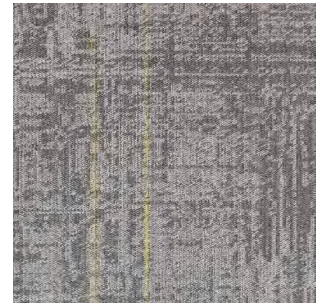
RE-TY50



RE-TY51



RE-TY52



RE-TY53



RE-TY70



RE-TY71



RE-TY72

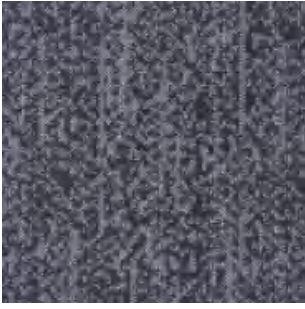


RE-TY73

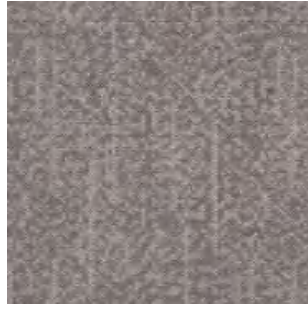
PRODUCT DESCRIPTION		
Tufted Construction: Multi-Level Loop	Backing: EP Soft Cushion	Smoke Density: ASTM E 662-06 [Pass < 450]
Fiber: 100% polyester	Total thickness:12mm±0.5mm	Reaction to Fire: EN ISO 9239-1:2002 [Cf1-s1]
Dyemethod: Solution Dyed	Primary Backing: Synthetic	Color Fastness: AATCC / 16 [5/5 on Beige Scale]
Gauge: 1/12"	Secondary Backing: PVC reinforced by Glass Fiber	Thermal Resistance: ISO 8302 [0.4m2 .K/W]
Pile Weight(g/ m ²): 780g+5%	Installation Method: Monolithic or Quarter Turn	Impact Sound reduction: ISO 140-8 [23dB]
Pile Thickness: 5mm+0.5mm	Traffic Classification: Commercial	Sound Absorption: EN ISO 11654 [aw:0.15(H)]
Tile Size: 667x667mm	Anti-microbial: Ultra Fresh (Optional)	Castor Chair Test: DIN 54324 [R ≥2.4]



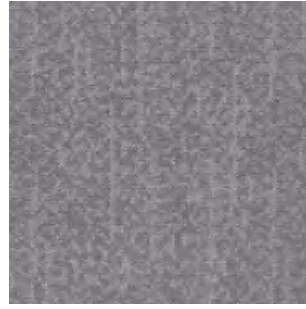
RE-GYY Series



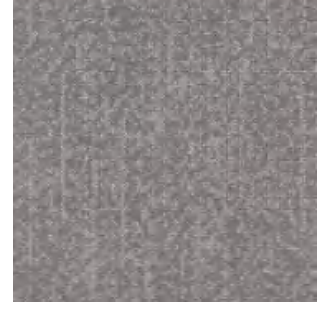
RE-GYY01



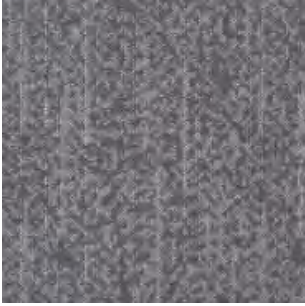
RE-GYY02



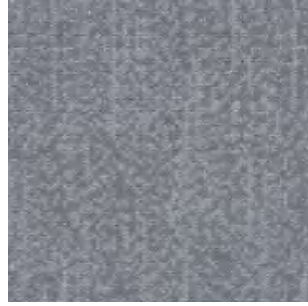
RE-GYY03



RE-GYY04



RE-GYY05

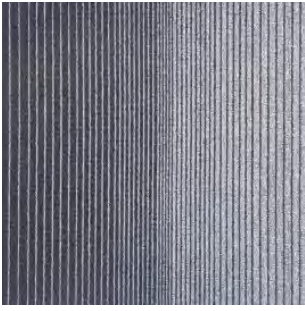


RE-GYY06

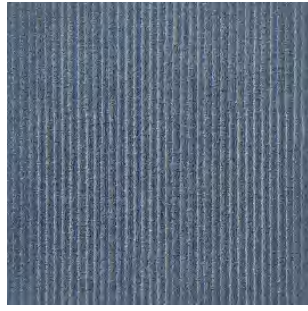
PRODUCT DESCRIPTION		
Tufted Construction: Multi-Level Loop	Backing: EP Soft Cushion	Smoke Density: ASTM E 662-06 [Pass < 450]
PileFiber: 100%PP	Total thickness: 10/7mm ± 0.5mm	Reaction to Fire: EN ISO 9239-1:2002 [Cf1-s1]
Dyemethod: Solution Dyed	Primary Backing: Synthetic	Color Fastness: AATCC / 16 [5/5 on Beige Scale]
Gauge: 1/10"	Secondary Backing: PVC reinforced by Glass Fiber	Thermal Resistance: ISO 8302 [0.4m2 .K/W]
Pile Weight(g/ m²): 500g+5%	Installation Method: Monolithic or Quarter Turn	Impact Sound reduction: ISO 140-8 [23dB]
Pile Thickness: 3.5mm+0.5mm	Traffic Classification: Commercial	Sound Absorption: EN ISO 11654 [aw:0.15(H)]
Tile Size: 500x500mm	Anti-microbial: Ultra Fresh (Optional)	Castor Chair Test: DIN 54324 [R ≥2.4]



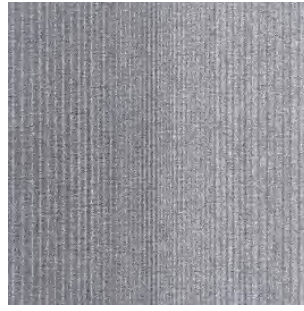
RE-EQ Series



RE-EQ1001



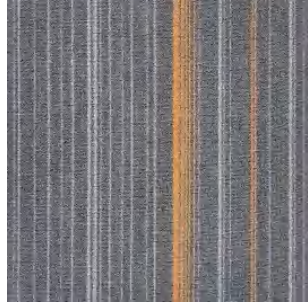
RE-EQ1002



RE-EQ1003



RE-EQ2001



RE-EQ2002



RE-EQ2003



RE-EQ2004

PRODUCT DESCRIPTION		
Tufted Construction: Level Loop Pile	Backing: EP Soft Cushion	Smoke Density: ASTM E 662-06 [Pass < 450]
Fiber: 100%PP	Total thickness: 10/7mm ± 0.5mm	Reaction to Fire: EN ISO 9239-1:2002 [Cf1-s1]
Dyemethod: Solution Dyed	Primary Backing: Synthetic	Color Fastness: AATCC / 16 [5/5 on Beige Scale]
Gauge: 1/10"	Secondary Backing: PVC reinforced by Glass Fiber	Thermal Resistance: ISO 8302 [0.4m2 .K/W]
Pile Weight(g/ m²): 500g+5%	Installation Method: Monolithic or Quarter Turn	Impact Sound reduction: ISO 140-8 [23dB]
Pile Thickness: 3.5mm+0.5mm	Traffic Classification: Commercial	Sound Absorption: EN ISO 11654 [aw:0.15(H)]
Tile Size: 500x500mm	Anti-microbial: Ultra Fresh (Optional)	Castor Chair Test: DIN 54324 [R ≥2.4]



RE-HTL Series



RE-HTL01

RE-HTL02

RE-HTL03

RE-HTL04

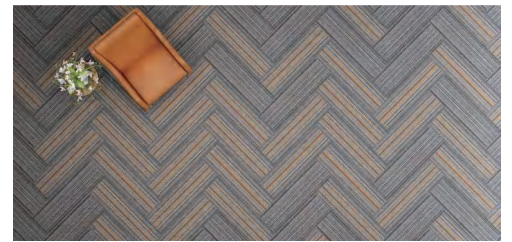
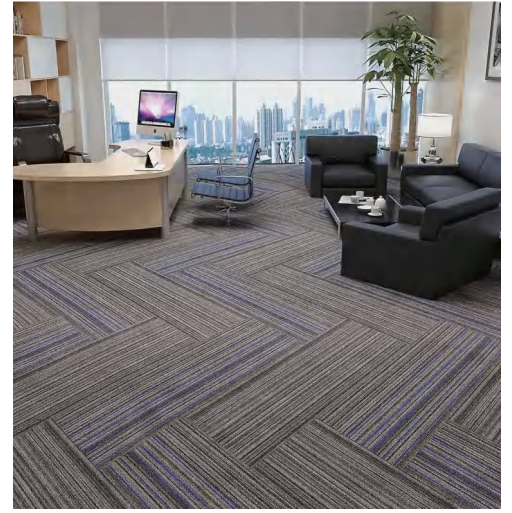


RE-HTL05

RE-HTL06

RE-HTL07

RE-HTL08



PRODUCT DESCRIPTION		
Tufted Construction: Level Loop Pile	Backing: EP Soft Cushion	Smoke Density: ASTM E 662-06 [Pass < 450]
Fiber: 100%PP	Total thickness: 10/7mm ± 0.5mm	Reaction to Fire: EN ISO 9239-1:2002 [Cf1-s1]
Dyemethod: Solution Dyed	Primary Backing: Synthetic	Color Fastness: AATCC / 16 [5/5 on Beige Scale]
Gauge: 1/10"	Secondary Backing: PVC reinforced by Glass Fiber	Thermal Resistance: ISO 8302 [0.4m2 .K/W]
Pile Weight(g/ m²): 500g+5%	Installation Method: Monolithic or Quarter Turn	Impact Sound reduction: ISO 140-8 [23dB]
Pile Thickness: 3.5mm+0.5mm	Traffic Classification: Commercial	Sound Absorption: EN ISO 11654 [aw:0.15(H)]
Tile Size: 333.3×1000mm	Anti-microbial: Ultra Fresh (Optional)	Castor Chair Test: DIN 54324 [R ≥2.4]

RE-ZS Series



RE-ZS1001



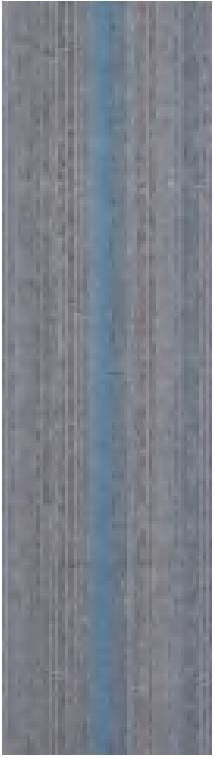
RE-ZS1002



RE-ZS1003



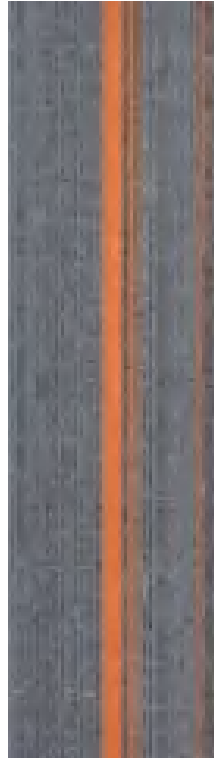
RE-ZS1004



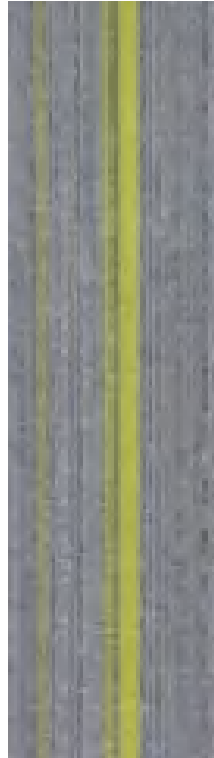
RE-ZS2001



RE-ZS2002



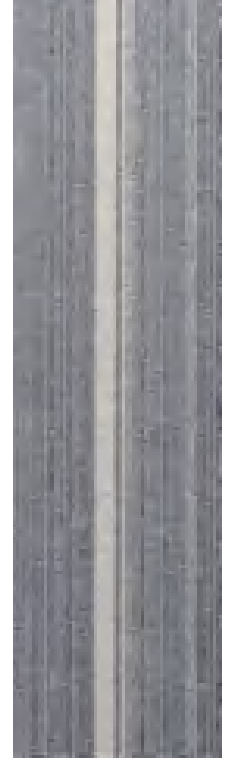
RE-ZS2003



RE-ZS2004



RE-ZS2005



RE-ZS2006



PRODUCT DESCRIPTION		
Tufted Construction: Level Loop Pile	Backing: EP Soft Cushion	Smoke Density: ASTM E 662-06 [Pass < 450]
Fiber: 100%PP	Total thickness: 10/7mm ± 0.5mm	Reaction to Fire: EN ISO 9239-1:2002 [Cf1-s1]
Dyemethod: Solution Dyed	Primary Backing: Synthetic	Color Fastness: AATCC / 16 [5/5 on Beige Scale]
Gauge: 1/10"	Secondary Backing: PVC reinforced by Glass Fiber	Thermal Resistance: ISO 8302 [0.4m2 .K/W]
Pile Weight(g/ m ²): 500g+5%	Installation Method: Monolithic or Quarter Turn	Impact Sound reduction: ISO 140-8 [23dB]
Pile Thickness: 3.5mm+0.5mm	Traffic Classification: Commercial	Sound Absorption: EN ISO 11654 [aw:0.15(H)]
Tile Size: 500x500mm or 250x1000mm	Anti-microbial: Ultra Fresh (Optional)	Castor Chair Test: DIN 54324 [R ≥2.4]

RE-RW Series



RE-RW1001



RE-RW1002



RE-RW1003



RE-CH1003



RE-RWS01



RE-RWS11



RE-RWS02



RE-RWS22



RE-RWS03



RE-RWS33



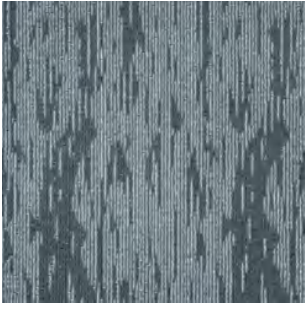
RE-RWS01



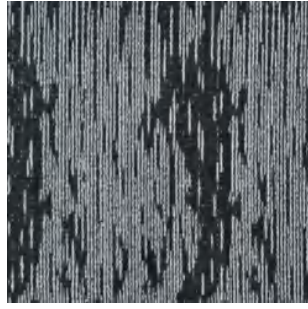
PRODUCT DESCRIPTION

Tufted Construction: Level Loop Pile	Backing: EP Soft Cushion	Smoke Density: ASTM E 662-06 [Pass < 450]
Fiber: 100%PP	Total thickness: 10/7mm ± 0.5mm	Reaction to Fire: EN ISO 9239-1:2002 [Cf1-s1]
Dyemethod: Solution Dyed	Primary Backing: Synthetic	Color Fastness: AATCC / 16 [5/5 on Beige Scale]
Gauge: 1/10"	Secondary Backing: PVC reinforced by Glass Fiber	Thermal Resistance: ISO 8302 [0.4m2 .K/W]
Pile Weight(g/ m²): 500g+5%	Installation Method: Monolithic or Quarter Turn	Impact Sound reduction: ISO 140-8 [23dB]
Pile Thickness: 3.5mm+0.5mm	Traffic Classification: Commercial	Sound Absorption: EN ISO 11654 [aw:0.15(H)]
Tile Size: 500×500mm or 250×1000mm	Anti-microbial: Ultra Fresh (Optional)	Castor Chair Test: DIN 54324 [R ≥2.4]

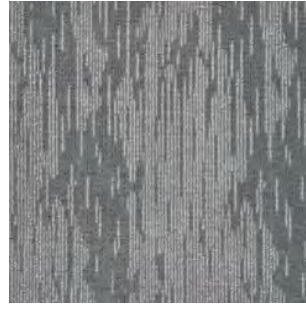
RE-MNK Series



RE-MNK319



RE-MNK328



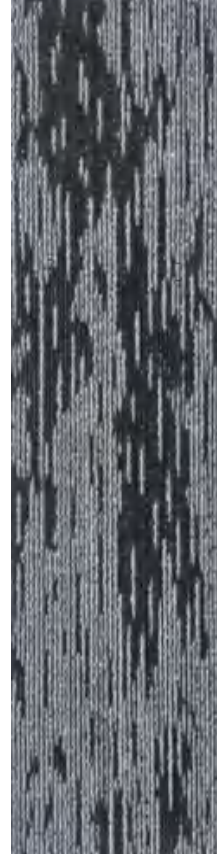
RE-MNK347



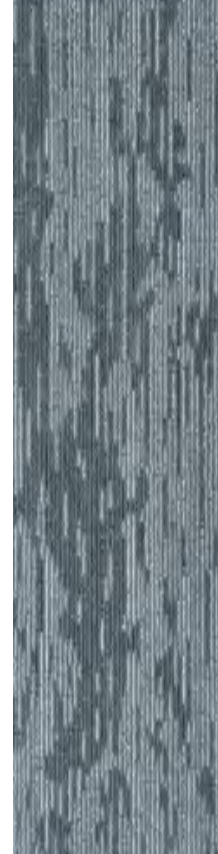
RE-MNK379



RE-MNK1001



RE-MNK1002



RE-MNK1003



RE-MNK1004



PRODUCT DESCRIPTION

Tufted Construction: Multi-Level Loop	Backing: EP Soft Cushion	Smoke Density: ASTM E 662-06 [Pass < 450]
Fiber: 100%PP	Total thickness: 10/7mm ± 0.5mm	Reaction to Fire: EN ISO 9239-1:2002 [Cf1-s1]
Dyemethod: Solution Dyed	Primary Backing: Synthetic	Color Fastness: AATCC / 16 [5/5 on Beige Scale
Gauge: 1/10"	Secondary Backing: PVC reinforced by Glass Fiber	Thermal Resistance: ISO 8302 [0.4m2 .K/W]
Pile Weight(g/ m ²): 500g+5%	Installation Method: Monolithic or Quarter Turn	Impact Sound reduction: ISO 140-8 [23dB]
Pile Thickness: 3.5mm+0.5mm	Traffic Classification: Commercial	Sound Absorption: EN ISO 11654 [aw:0.15(H)]
Tile Size: 500×500mm or 250×1000mm	Anti-microbial: Ultra Fresh (Optional)	Castor Chair Test: DIN 54324 [R ≥2.4]

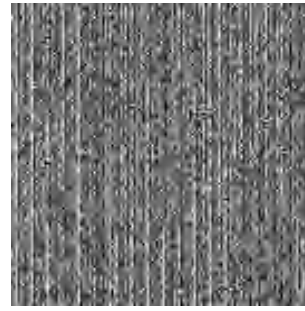
RE-H10 Series



RE-H1001



RE-H1002



RE-H1003



RE-H1003

PRODUCT DESCRIPTION

Tufted Construction: Multi-Level Loop	Backing: EP Soft Cushion	Smoke Density: ASTM E 662-06 [Pass < 450]
Fiber: 100%PP	Total thickness: 10/7mm ± 0.5mm	Reaction to Fire: EN ISO 9239-1:2002 [Cf1-s1]
Dyemethod: Solution Dyed	Primary Backing: Synthetic	Color Fastness: AATCC / 16 [5/5 on Beige Scale
Gauge: 1/10"	Secondary Backing: PVC reinforced by Glass Fiber	Thermal Resistance: ISO 8302 [0.4m2 .K/W]
Pile Weight(g/ m²): 500g+5%	Installation Method: Monolithic or Quarter Turn	Impact Sound reduction: ISO 140-8 [23dB]
Pile Thickness: 3.5mm+0.5mm	Traffic Classification: Commercial	Sound Absorption: EN ISO 11654 [aw:0.15(H)]
Tile Size: 500x500mm	Anti-microbial: Ultra Fresh (Optional)	Castor Chair Test: DIN 54324 [R ≥2.4]



RE-K10 Series



RE-K1001



RE-K1002



RE-K1003

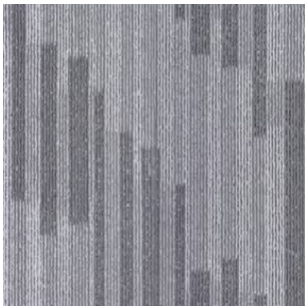


RE-K1003

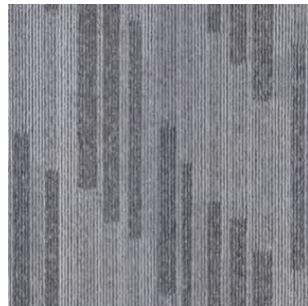
PRODUCT DESCRIPTION		
Tufted Construction: Level Loop Pile	Backing: EP Soft Cushion	Smoke Density: ASTM E 662-06 [Pass < 450]
Fiber: 100%PP	Total thickness: 10/7mm ± 0.5mm	Reaction to Fire: EN ISO 9239-1:2002 [Cf1-s1]
Dyemethod: Solution Dyed	Primary Backing: Synthetic	Color Fastness: AATCC / 16 [5/5 on Beige Scale]
Gauge: 1/10"	Secondary Backing: PVC reinforced by Glass Fiber	Thermal Resistance: ISO 8302 [0.4m2 .K/W]
Pile Weight(g/ m ²): 500g+5%	Installation Method: Monolithic or Quarter Turn	Impact Sound reduction: ISO 140-8 [23dB]
Pile Thickness: 3.5mm+0.5mm	Traffic Classification: Commercial	Sound Absorption: EN ISO 11654 [aw:0.15(H)]
Tile Size: 500x500mm	Anti-microbial: Ultra Fresh (Optional)	Castor Chair Test: DIN 54324 [R ≥2.4]



RE-MT Series



RE-MT01



RE-MT02

PRODUCT DESCRIPTION		
Tufted Construction: Multi-Level Loop	Backing: EP Soft Cushion	Smoke Density: ASTM E 662-06 [Pass < 450]
Fiber: 100%PP	Total thickness: 10/7mm ± 0.5mm	Reaction to Fire: EN ISO 9239-1:2002 [Cf1-s1]
Dyemethod: Solution Dyed	Primary Backing: Synthetic	Color Fastness: AATCC / 16 [5/5 on Beige Scale]
Gauge: 1/10"	Secondary Backing: PVC reinforced by Glass Fiber	Thermal Resistance: ISO 8302 [0.4m2 .K/W]
Pile Weight(g/ m ²): 500g+5%	Installation Method: Monolithic or Quarter Turn	Impact Sound reduction: ISO 140-8 [23dB]
Pile Thickness: 3.5mm+0.5mm	Traffic Classification: Commercial	Sound Absorption: EN ISO 11654 [aw:0.15(H)]
Tile Size: 500x500mm	Anti-microbial: Ultra Fresh (Optional)	Castor Chair Test: DIN 54324 [R ≥2.4]

RE-LT Series



RE-LT1001



RE-LT1001



RE-LT1001



RE-LT1001



RE-LT2002



RE-LT2002



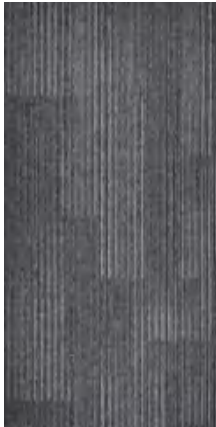
RE-LT2002



RE-LT2002



RE-LT3003



RE-LT3003



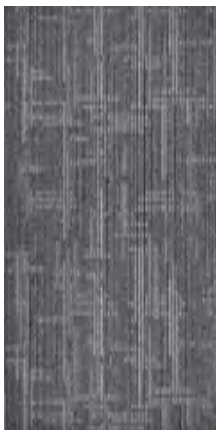
RE-LT3003



RE-LT3003



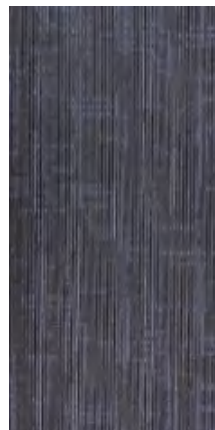
RE-LT4003



RE-LT4003



RE-LT4003



RE-LT4003

PRODUCT DESCRIPTION

Tufted Construction: Multi-Level Loop

Fiber: Composite Fiber

Dyemethod: Solution Dyed

Gauge: 1/10"

Pile Weight(g/㎡): 585g+5%

Pile Thickness: 4mm+0.5mm

Tile Size: 500×1000mm

Backing: EP Soft Cushion

Primary Backing: Synthetic

Secondary Backing: PVC reinforced by Glass Fiber

Installation Method: Monolithic or Quarter Turn

Traffic Classification: Commercial

Anti-microbial: Ultra Fresh (Optional)

Smoke Density: ASTM E 662-06 [Pass < 450]

Reaction to Fire: EN ISO 9239-1:2002 [Cf1-s1]

Color Fastness: AATCC / 16 [5/5 on Beige Scale]

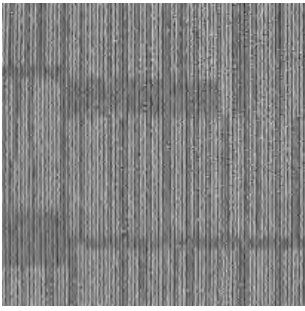
Thermal Resistance: ISO 8302 [0.4m2 .K/W]

Impact Sound reduction: ISO 140-8 [23dB]

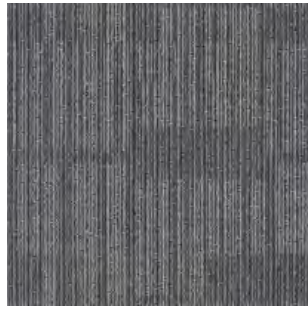
Sound Absorption: EN ISO 11654 [aw:0.15(H)]

Castor Chair Test: DIN 54324 [R ≥2.4]

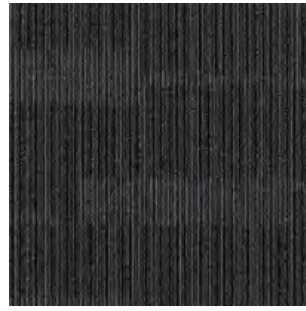
RE-DG Series



RE-DG01



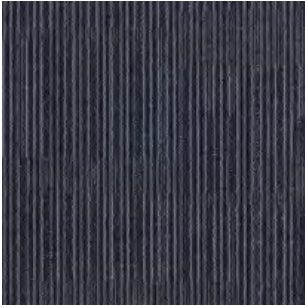
RE-DG02



RE-DG03



RE-DG03



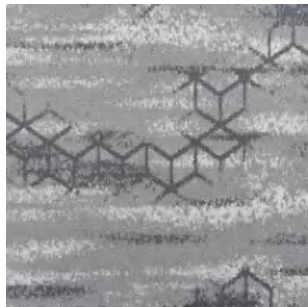
RE-DG01

PRODUCT DESCRIPTION		
Tufted Construction: Multi-Level Loop	Backing: pvc	Smoke Density: ASTM E 662-06 [Pass < 450]
Fiber: 100%PP	Total thickness: 6mm±0.5mm	Reaction to Fire: EN ISO 9239-1:2002 [Cf1-s1]
Dyemethod: Solution Dyed	Primary Backing: Synthetic	Color Fastness: AATCC / 16 [5/5 on Beige Scale]
Gauge: 1/10"	Secondary Backing: PVC reinforced by Glass Fiber	Thermal Resistance: ISO 8302 [0.4m2 .K/W]
Pile Weight(g/ m ²): 470g+5%	Installation Method: Monolithic or Quarter Turn	Impact Sound reduction: ISO 140-8 [23dB]
Pile Thickness: 4mm+0.5mm	Traffic Classification: Commercial	Sound Absorption: EN ISO 11654 [aw:0.15(H)]
Tile Size: 500x500mm	Anti-microbial: Ultra Fresh (Optional)	Castor Chair Test: DIN 54324 [R ≥2.4]

RE-DL Series



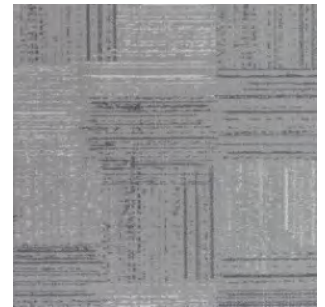
RE-DL1001



RE-DL1002



RE-DL1003



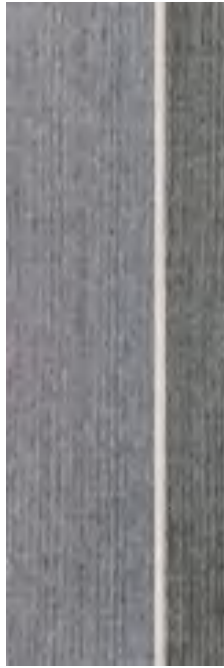
RE-DL1004

PRODUCT DESCRIPTION		
Tufted Construction: Multi-Level Loop	Backing: EP Soft Cushion	Smoke Density: ASTM E 662-06 [Pass < 450]
Fiber: 100% polyester	Total thickness: 12mm±0.5mm	Reaction to Fire: EN ISO 9239-1:2002 [Cf1-s1]
Dyemethod: Solution Dyed	Primary Backing: Synthetic	Color Fastness: AATCC / 16 [5/5 on Beige Scale]
Gauge: 1/12"	Secondary Backing: PVC reinforced by Glass Fiber	Thermal Resistance: ISO 8302 [0.4m2 .K/W]
Pile Weight(g/ m ²): 800g+5%	Installation Method: Monolithic or Quarter Turn	Impact Sound reduction: ISO 140-8 [23dB]
Pile Thickness: 5mm+0.5mm	Traffic Classification: Commercial	Sound Absorption: EN ISO 11654 [aw:0.15(H)]
Tile Size: 500x500mm	Anti-microbial: Ultra Fresh (Optional)	Castor Chair Test: DIN 54324 [R ≥2.4]

RE-CH Series



RE-CH01



RE-CH02



RE-CH03

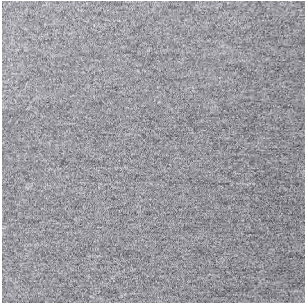


RE-CH04

PRODUCT DESCRIPTION	
Tufted Construction:	Level Loop Pile
Fiber:	100%PP
Dyemethod:	Solution Dyed
Gauge:	1/10"
Pile Weight(g/ m ²):	450g+5%
Pile Thickness:	3.5mm+0.5mm
Tile Size:	500x500mm
Backing:	EP Soft Cushion
Primary Backing:	Synthetic
Secondary Backing:	PVC reinforced by Glass Fiber
Installation Method:	Monolithic or Quarter Turn
Traffic Classification:	Commercial
Anti-microbial:	Ultra Fresh (Optional)
Smoke Density:	ASTM E 662-06 [Pass < 450]
Reaction to Fire:	EN ISO 9239-1:2002 [Cf1-s1]
Color Fastness:	AATCC / 16 [5/5 on Beige Scale]
Thermal Resistance:	ISO 8302 [0.4m2 .K/W]
Impact Sound reduction:	ISO 140-8 [23dB]
Sound Absorption:	EN ISO 11654 [aw:0.15(H)]
Castor Chair Test:	DIN 54324 [R ≥2.4]

Normal Performance Carpet Tile (Non flamme retardant / Non Anti -static)

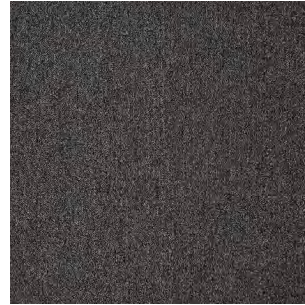
RE-HL10 Series



RE-HL1001



RE-HL1002



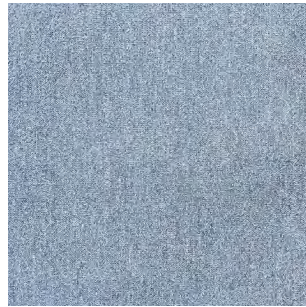
RE-HL1003



RE-HL1004



RE-HL1005



RE-HL1006

PRODUCT DESCRIPTION	
Tufted Construction: Level Loop Pile	Pile Height: 3.5mm+0.5mm
Fiber: 100%PP	Tile Size: 500x500mm
Dyemethod: Solution Dyed	Backing: EP Soft Cushion
Gauge: 1/10"	Total thickness: 10/7mm ± 0.5mm
Pile Weight(g/ m ²): 450g+5%	

